


# Fixed castor EDF 127 ZK


Extra Heavy Duty Series ED - Wheel Z


 -30 °C - +80 °C

  
 swivels easily

  
 wear resistant

  
 shock proof

  
 floor protective

  
 weather proof

## Wheel



Tread: Cast polyurethane, 95±3 Shore A

Wheel centre, Cast-iron - painted

## Fork

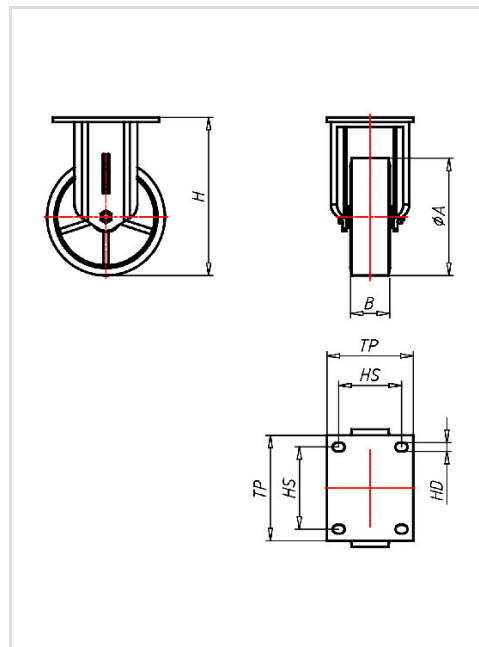
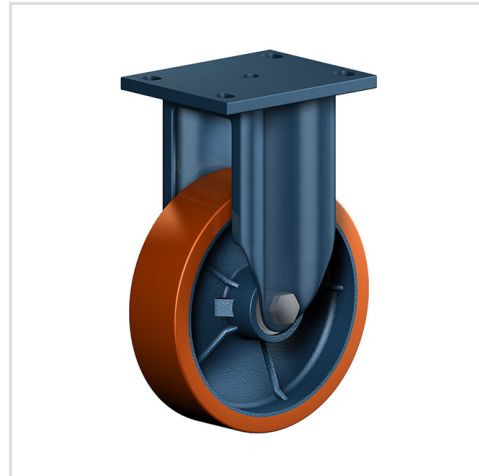


For applications where a super strong and durable caster is required,  
 one tapered roller and one axial ball bearing,  
 dust protection ring,  
 very strong integrated Kingpin,  
 locked nut, grease nipple, wheel axle bolted,  
 finish – painted

Fixed castor	Wheel-Ø A x width B mm: 125x50
Load Capacity kg:	480
Load capacity tested according to EN 12530 and EN 12527	
Overall height H mm:	172
Dimension of top plate TP mm:	135x110
Hole spacing HS mm:	105x80
Hole-Ø HD mm:	11
Wheel bearing:	Ball bearing

## Advantages

- ✓ silent in motion
- ✓ low rolling resistance
- ✓ high abrasion and tear resistance
- ✓ high resistance to shocks
- ✓ good chemical resistance



## Applications

- Metal-Technology
- Heavy duty dollies
- Trash container trucks
- Machinery moving dollies
- Workshops
- Racks
- Building-Industry
- Carpentry